



Ibbett Mosely



Quebec Avenue, Westerham, TN16 1BH

£1,700 Per Month

Available immediately (Subject to references) under the terms of an initial twelve month Assured Shorthold Tenancy.

This inner terraced three bedroom family home is situated in a most convenient position for Westerham Town centre and is within walking Distance of Churchill Primary School

- Three Bedrooms
- Bathroom and Separate W/C
- Reception Room
- Kitchen
- Gas Central Heating
- Double Glazing
- Two Off Road Parking Spaces
- Garden

Available unfurnished under the terms of an initial twelve month Assured Shorthold Tenancy, this modern inner terraced three bedroom family home is available immediately (subject to reference's)

LOCATION

Within the town there are a number of retail shops as well as two small supermarkets, there is a medical centre, library and a wide selection of cafe's, bars and restaurants.

Churchill School and the King George Playing Fields are within walking distance, with other state and private schools and sporting and recreational facilities in the nearby villages and towns.

Bus services from the town to Oxted, Sevenoaks and Bromley all with a wider choice of shops and stations to London.

M25 access from junctions 5 or 6.

GROUND FLOOR

A double glazed door with double glazed side window opens to the enclosed porch.

PORCH

With glazed door to the reception room.

RECEPTION ROOM

An L-shaped room with two radiators, double glazed windows to the front and back, cupboard under the stairs, serving hatch and stairs to the first floor.

KITCHEN

Fitted to two sides with base and wall units, built in electric hob, oven and extractor fan. There are free standing appliances including a fridge, freezer and washing machine(NOTE: The owner will remove these if not required by the ingoing tenant as they will not be replaced if they stop working). Floor mounted gas boiler for central heating and hot water, part tiled walls, double glazed window and double glazed door to the garden.

FIRST FLOOR

LANDING

Linen cupboard with hot water cylinder and shelving. Hatch to the loft space.

BEDROOM ONE

with radiator and double glazed window.

BEDROOM TWO

With radiator and double glazed window.

BEDROOM THREE

With radiator, double glazed window and fitted shelves and clothes hanging rail in recess.

BATHROOM

With enclosed bath with a separate shower over and shower screen. Hand basin, radiator, part tiled walls, extractor fan and double glazed window.

SEPARATE W.C.

with low level suite and double glazed window.

OUTSIDE

PARKING

There is space to park two vehicles to the front of the house.

GARDEN

A small area of lawn to the front of the house with to the back a patio, lawn and garden shed.

DIRECTIONS

Take the A233 London Road from Westerham towards Biggin Hill and Bromley. Quebec Avenue will be at the foot of the hill on the right.

COUNCIL TAX

The property is located in the Sevenoaks District and is in council tax band D

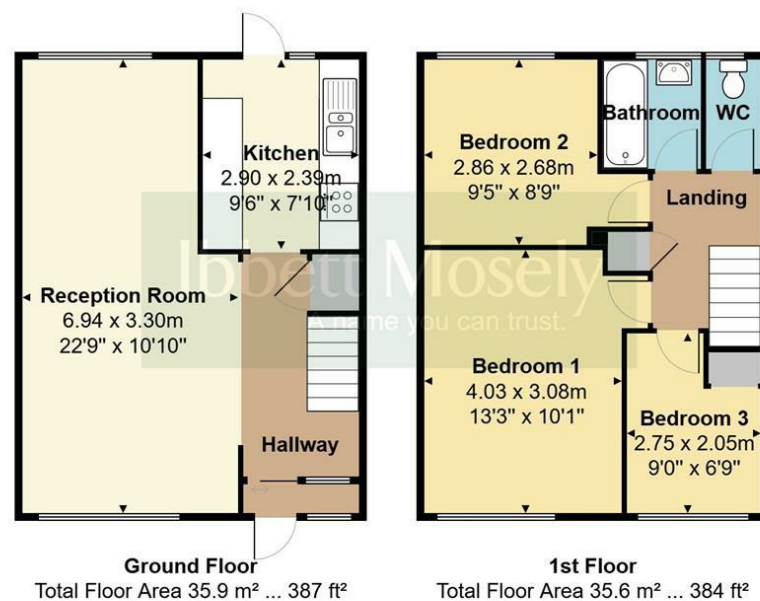
SERVICES

Mains gas, water, electricity and drainage are connected.



Quebec Avenue, Westerham, TN16

Total Floor Area: 71.0 m² ... 764 ft²



Measurements are approximate, not to scale and for illustrative purposes only.
www.essentialpropertymarketing.com

Ibbett Mosely

Westerham 01959 563265

Offices at - BOROUGH GREEN - OTFORD - SEVENOAKS - SOUTHWARK
TONBRIDGE - WESTMINSTER - WESTERHAM - WEST MALLING

www.ibbettmosely.co.uk